

**Floor Plan:**  
**Bluffton-TX**

**3 Beds | 2 Baths | 1,863 sqft | Garage: No**



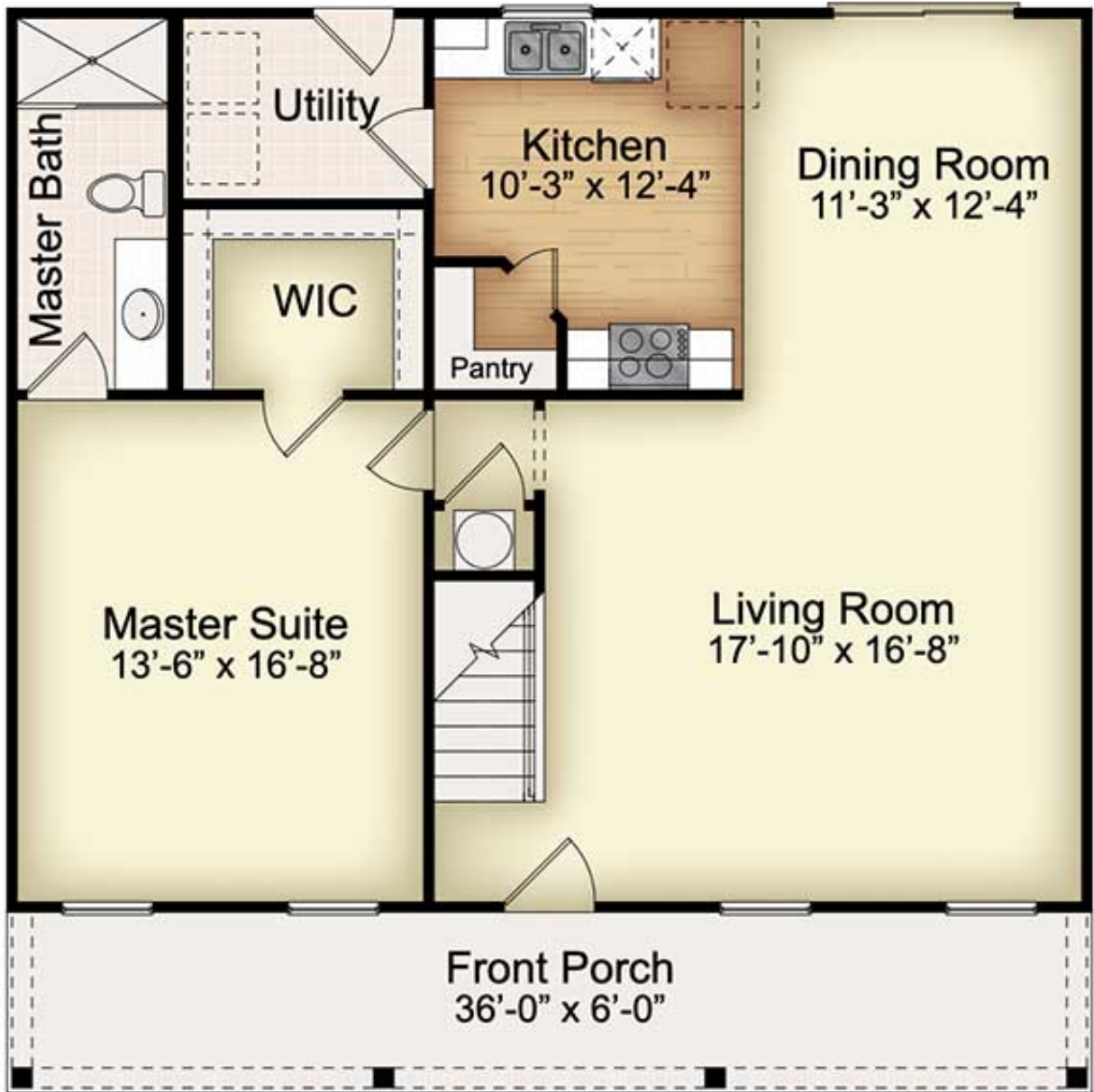
**Bluffton**

Escape to a charming Cape Cod home, the Bluffton. From the downstairs owner's suite with a walk-in closet to two additional bedrooms upstairs - you'll find plenty of comfort and privacy for all!

- Downstairs owner's suite
- Modern version of a classic cottage
- Traditional layout
- Cape Cod style

**Floor Plan:**  
**Bluffton-TX**

3 Beds | 2 Baths | 1,863 sqft | Garage: No

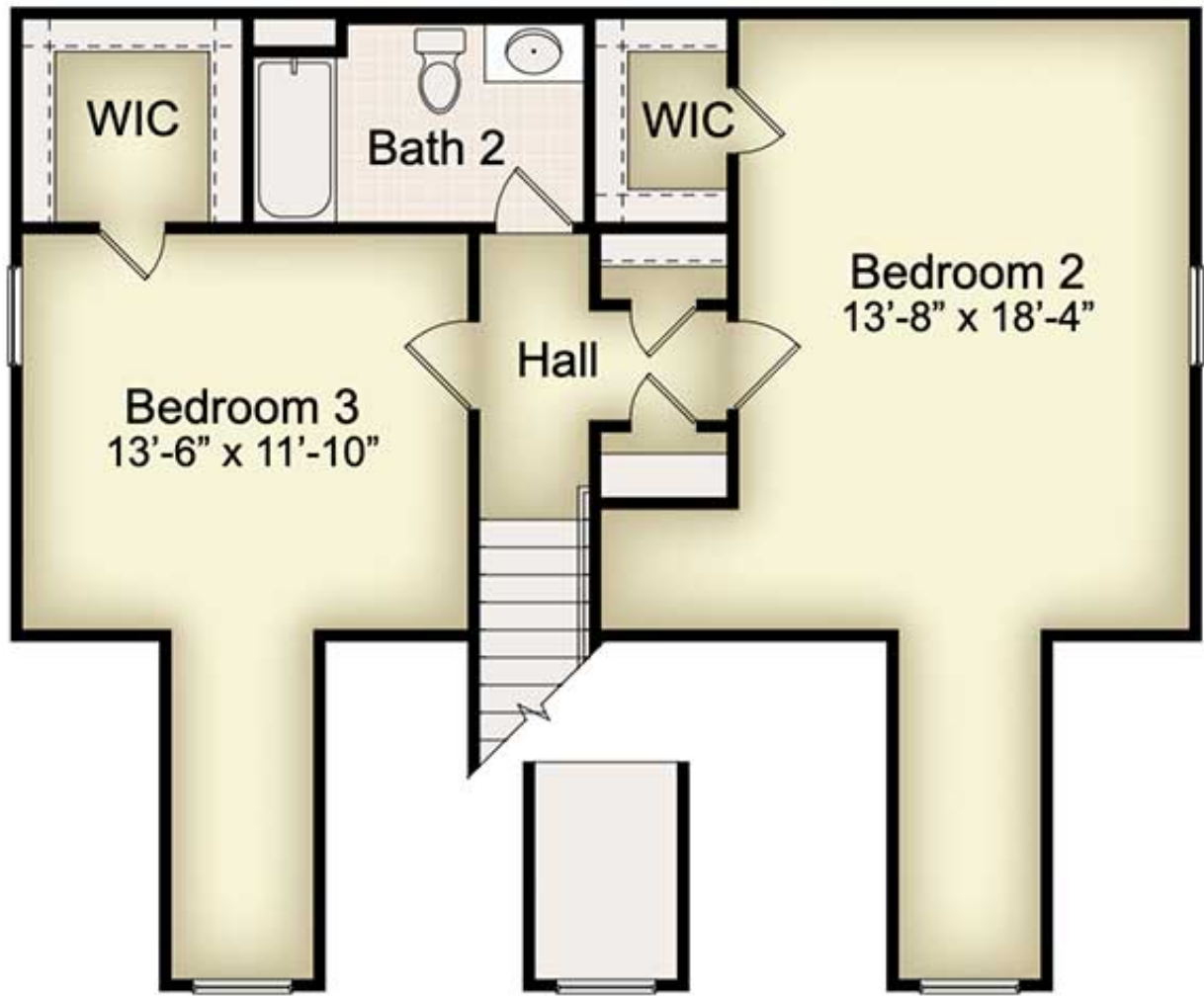


**FP1**

Floor Plan 1

**Floor Plan:**  
**Bluffton-TX**

3 Beds | 2 Baths | 1,863 sqft | Garage: No



**FP2**

Floor Plan 2