

Floor Plan:
Graceville-TX

3 Beds | 2 Baths | 1,439 sqft | Garage: No



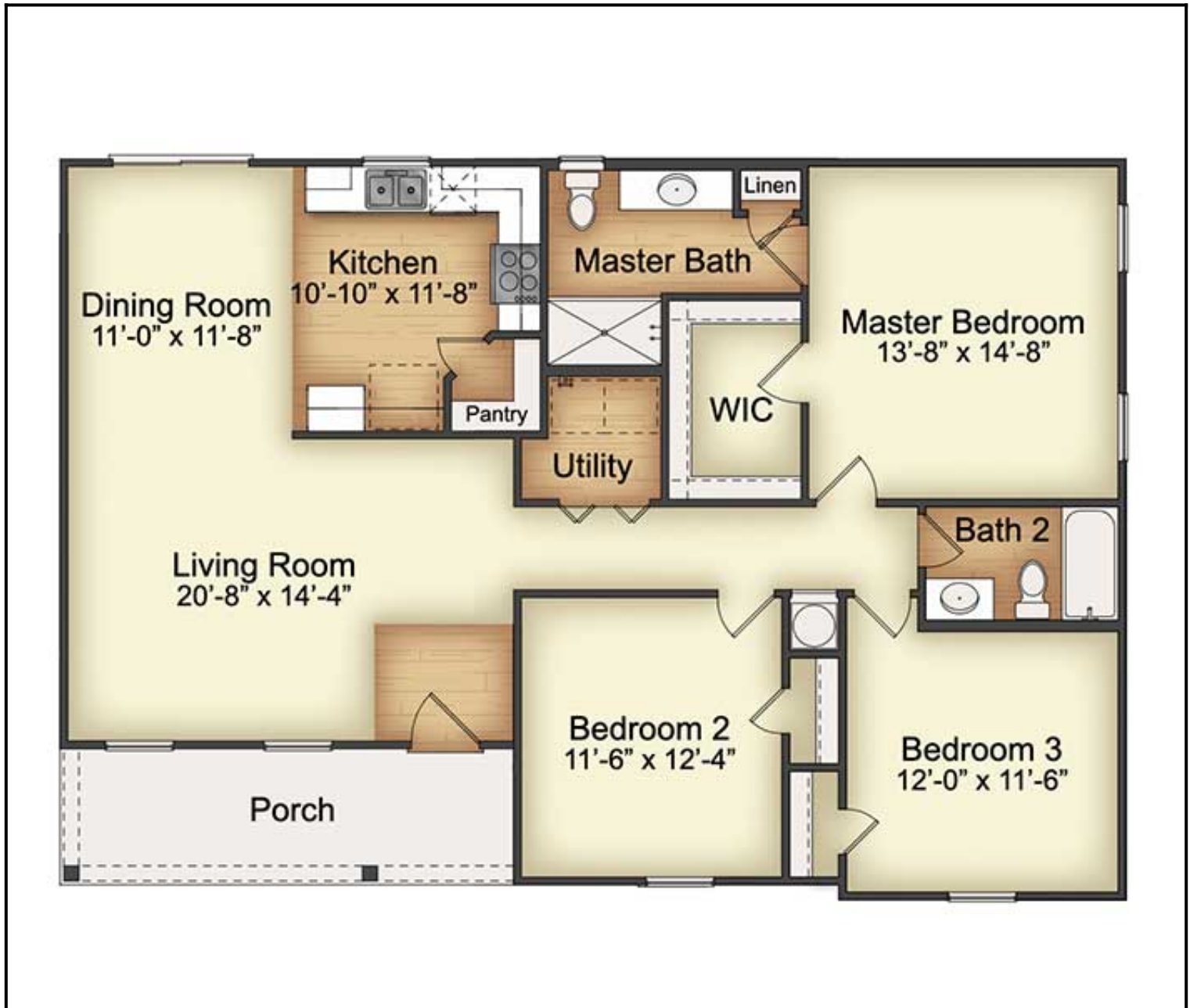
Graceville

This model's practical layout offers a kitchen, dining room, and living room flowing together to create the perfect area for day-to-day living and entertaining. The owner's suite includes a private bath and walk-in closet for keeping everything in its place.

- Simple, practical layout
- Walk-in closet in owner's suite
- Ideal for both every day and entertaining needs
- Optional bonus room

Floor Plan:
Graceville-TX

3 Beds | 2 Baths | 1,439 sqft | Garage: No



First Floor

First Floor