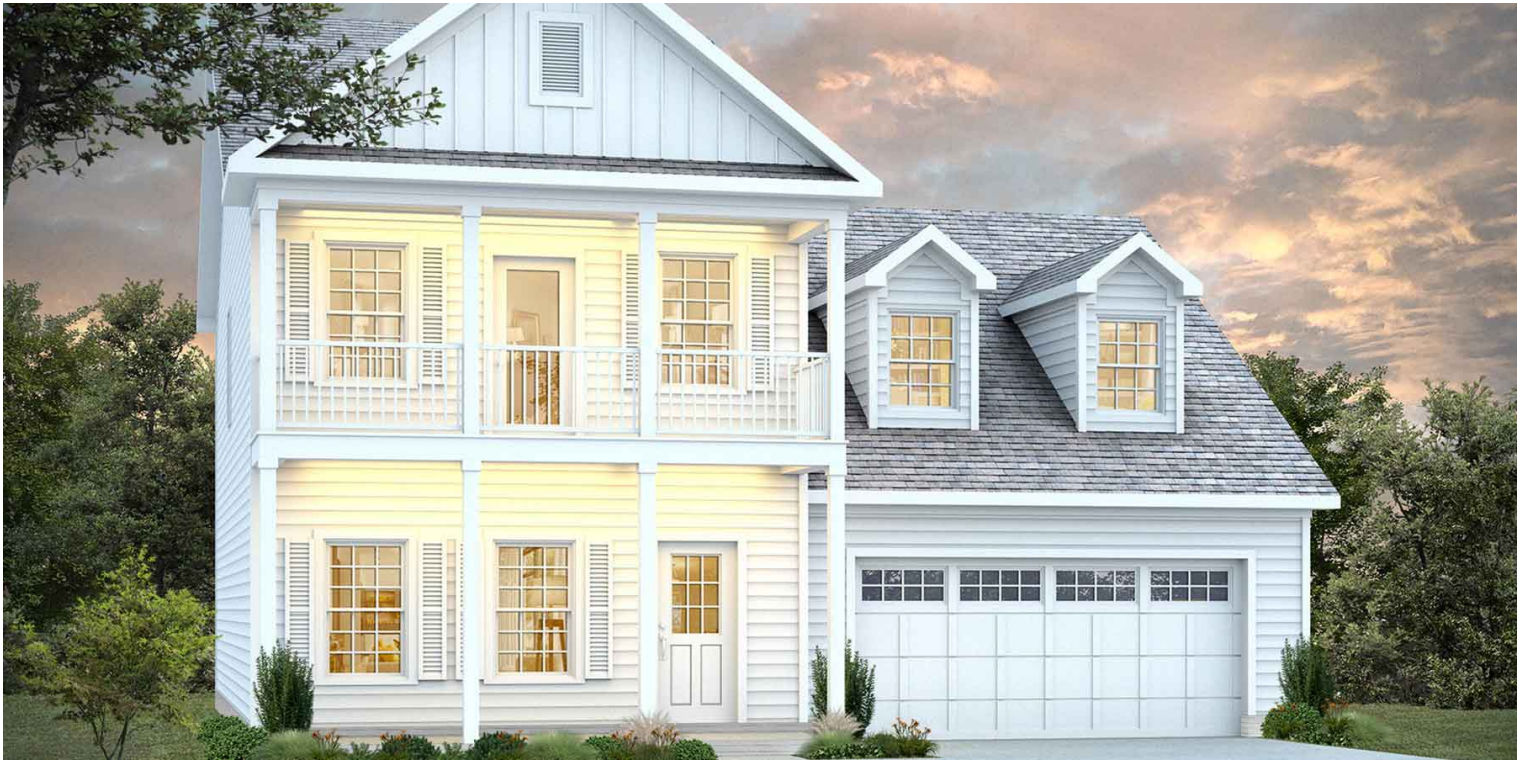


Floor Plan: Jamesville-NC

3 Beds | 2.5 Baths | 2,053 sqft | Garage: Yes



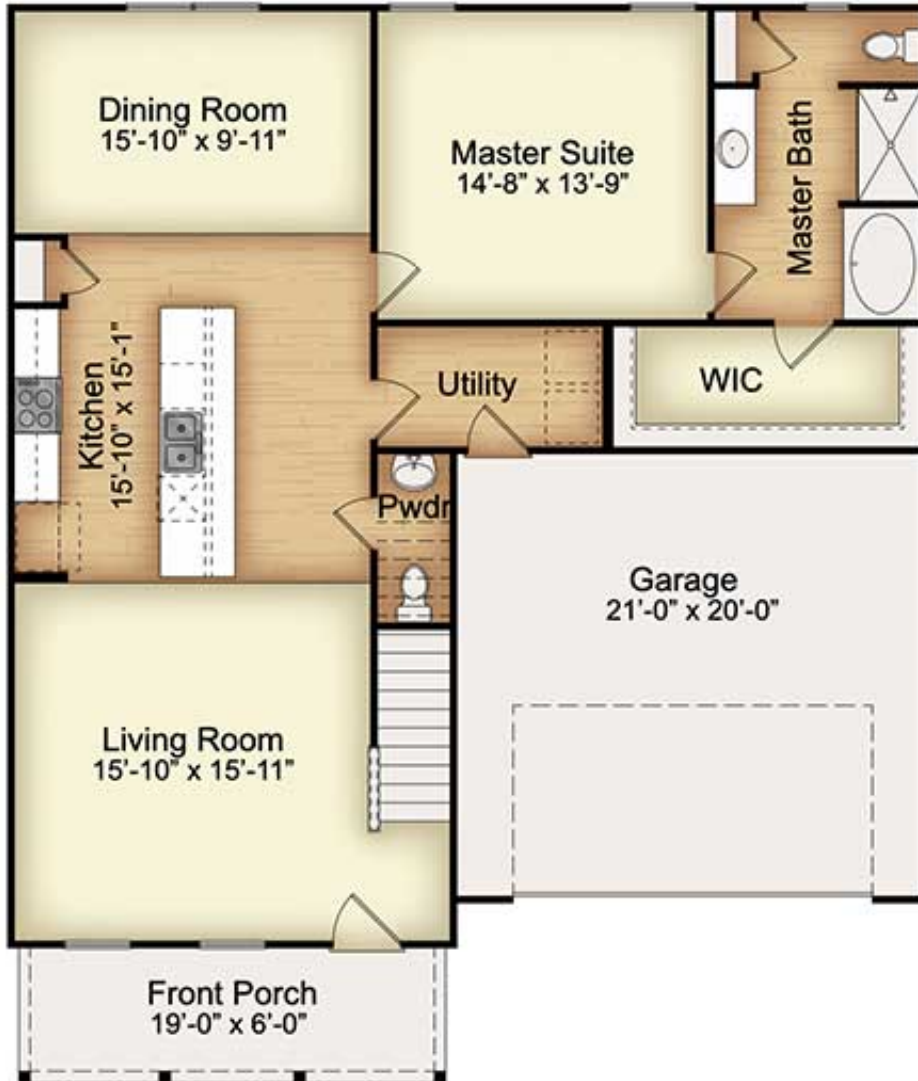
Jamesville

With its beautiful design, the Jamesville offers everything you could want for your perfect home. The inviting, generous layout is complemented by the convertible attic (game room or home theater, anyone?)

- Large, comfortable living spaces
- Beautiful open floor plan
- Spacious study room
- Convertible attic space

Floor Plan:
Jamesville-NC

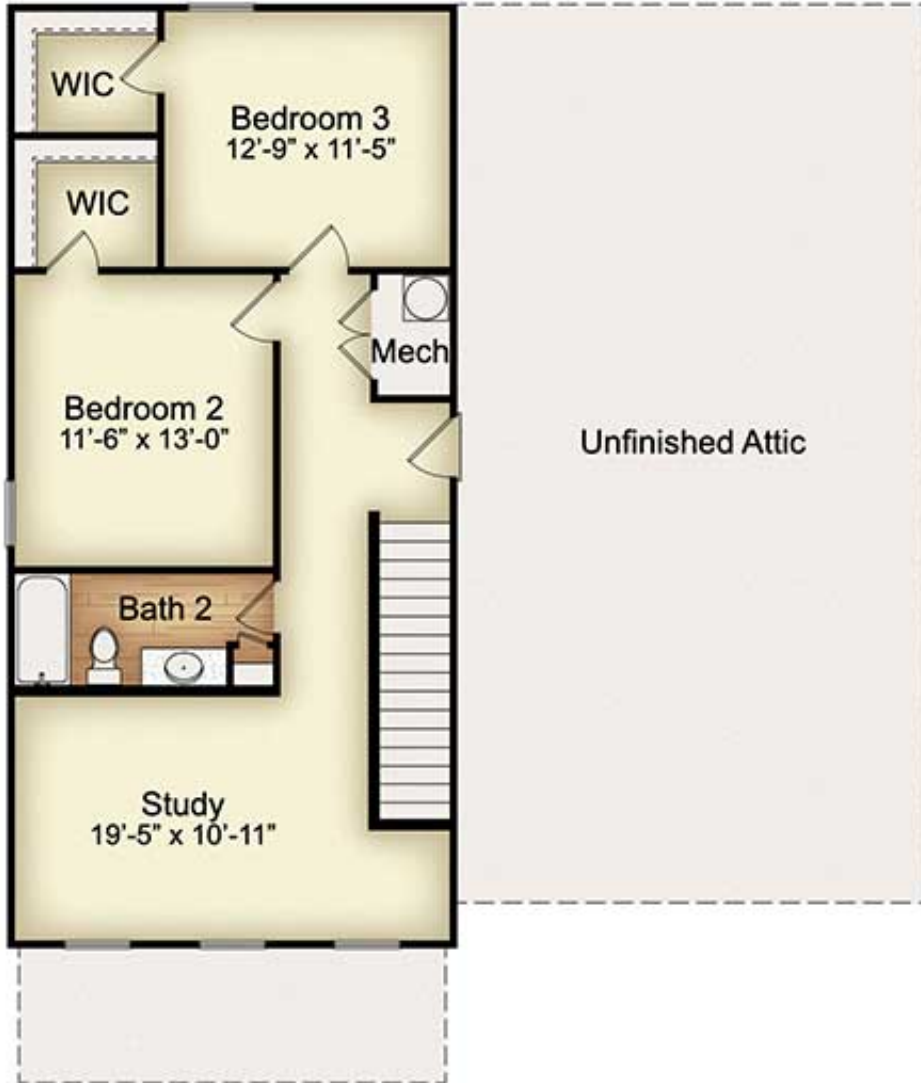
3 Beds | 2.5 Baths | 2,053 sqft | Garage: Yes



First Floor

Floor Plan:
Jamesville-NC

3 Beds | 2.5 Baths | 2,053 sqft | Garage: Yes



Second Floor

|